

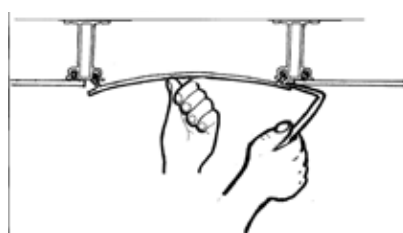
## PAINTING

**Requirements:** Your Zip-UP Ceiling® System may be painted only with latex paint. Always prime before painting for best results.

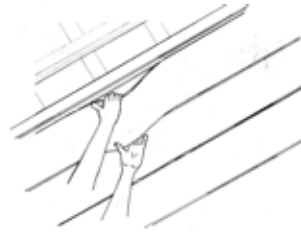
**Panel removal:** Painting over panel joint lines may cause difficulty for panel removal. Removal of a panel that has been painted over may cause the paint to chip or flake requiring touch up.

## PANEL REMOVAL

Once the Zip-UP Ceiling® is in place, it may be necessary to remove a Panel to access plumbing or wiring. To remove a Panel, simply push up in the center of the Panel to be removed and using a pry bar or the claw part of your hammer pry the exposed Panel edge down one side at a time. Once the seal of the Panel is broken, the Panel will unzip.



Push panel in center to expose Edge for pry-bar access



Always remove panel From the center

## STORAGE

To Store your Zip-UP Ceiling® System, while you wait for installation, it is important to lay the components on a flat surface. If the Zip-UP Ceiling® System has been stored in severe cold temperatures, it will be necessary for the components to warm to room temperature before you will be able to install.

## 25-Year Limited Warranty

MP Global Products, LLC ("Manufacturer") warrants that its Zip-UP Ceiling System ("Product") is free from defects in manufacturing, materials and workmanship for a period of 25-years from the date the Product was originally purchased (the "Limited Warranty Period"). Manufacturer further warrants that the Product will snap together as designed for the limited warranty period. This limited warranty is extended to the original purchaser of the Product (the "Owner") and is subject to the exclusion and limitations provided below. This warranty is not transferable during the Limited Warranty Period.

IN THE EVENT OF A DEFECT, MALFUNCTION OR OTHER FAILURE OF THE PRODUCT (NOT OTHERWISE EXCLUDED BELOW), THE MANUFACTURER WILL REMEDY THE DEFECT OR FAILURE WITHOUT CHARGE TO THE CONSUMER PROVIDED NOTICE OF THE WARRANTY CLAIM IN THE MANNER PROVIDED BELOW IS RECEIVED BY MANUFACTURER WITHIN THE LIMITED WARRANTY PERIOD. THE REMEDY FOR ANY SUCH DEFECT, FAILURE OR MALFUNCTION IS LIMITED, AT MANUFACTURERS OPTION, TO THE REPAIR, REPLACEMENT, OR REFUND OF THE PURCHASE PRICE OF THE PRODUCT. THE REPAIR OR REPLACEMENT OPTIONS ARE LIMITED TO THE REPLACEMENT COST OF THE PRODUCT.

THIS LIMITED WARRANTY IS FURTHER SUBJECT TO THE CONDITIONS, LIMITATIONS, AND EXCLUSIONS PROVIDED ON THE REVERSE SIDE.

THIS WARRANTY GIVES YOU SPECIFIC LEGAL RIGHTS, AND YOU MAY ALSO HAVE OTHER RIGHTS THAT VARY FROM STATE TO STATE IN THE UNITED STATES OF AMERICA.

5 Year Limited Fade Warranty. MP Global Products, LLC ("Manufacturer") warrants that its Zip-UP Ceiling System ("Product") will not fade for a period of 5 years from the date the Product was originally purchased.

### CONDITIONS/EXCLUSIONS TO THE LIMITED WARRANTY

THIS 25-YEAR LIMITED WARRANTY IS FURTHER MADE SUBJECT TO THE FOLLOWING CONDITIONS AND EXCLUSIONS, PLEASE READ THE FOLLOWING CAREFULLY:

1. Required Installation. To be covered by this Limited Warranty, the Product must be installed following the Manufacturer's recommended installation instructions.
2. Damage Coverage. This warranty only covers damage caused to the Product.
3. Limitation on Causes of Defects Covered Under Warranty. This limited warranty covers only defects in manufacturing materials or workmanship and does not cover defects, malfunctions or failures resulting from any other cause including, without limitation: (i) improper or inadequate installation; (ii) defects caused by fire, flood, tornado, hurricane, acts of God, extraordinary environmental conditions, riot or other civil insurrections, or acts of war or conflict; (iii) defects caused by abusive conditions or accidents, such as but not limited to cutting or severe impact; (iv) installation or use of the product in any manner not recommended by the Manufacturer including, but not limited to, installation under uneven ceiling structures; and, (v) defects caused by improper or inadequate maintenance, cleaning, use or care of the Product including without limitation the use of improper or un-recommended cleaning solutions or cleaning practices.
4. Required Procedures to Submit a Warranty Claim. In order to obtain performance of any warranty obligation, the Owner must do the following:

Contact the Manufacturer at the toll free number listed below or by mail at the address listed below, and request a claim form. Complete and return the claim form to the Manufacturer within the Limited Warranty Period. The phone number and address to contact the Manufacturer for these purposes is as follows:

MP Global Products, LLC Attention: Zip-UP Warranty Claim Department  
2500 Old Hadar Road P.O. Box 2283  
Norfolk, Nebraska USA 68702-2283  
Phone: (888) 379-9695 Fax: (402) 379-9737

UNDER NO CIRCUMSTANCES SHALL MANUFACTURER BE LIABLE TO THE OWNER, OR ANY OTHER PERSON FOR ANY CONSEQUENTIAL, INCIDENTAL, ECONOMIC, DIRECT, INDIRECT, GENERAL, OR SPECIAL DAMAGES ARISING OUT OF ANY BREACH OF WARRANTY, EXPRESS OR IMPLIED, UNDER THIS CONTRACT.

SOME STATES DO NOT ALLOW THE EXCLUSION OR LIMITATION OF INCIDENTAL OR CONSEQUENTIAL DAMAGES, SO THE ABOVE LIMITATION OR EXCLUSION MAY NOT APPLY TO YOU.

# zipUP

## CEILING® SYSTEM

US PATENT 7,810,294 B2

## INSTALLATION INSTRUCTIONS



IMPORTANT READ THESE INSTRUCTIONS CAREFULLY BEFORE BEGINNING INSTALLATION OF YOUR Zip-UP Ceiling®

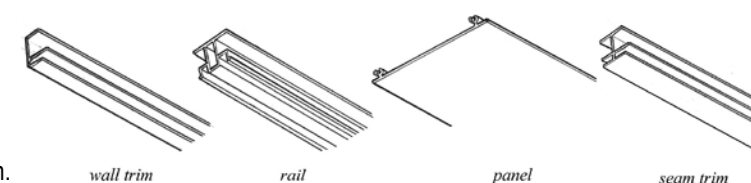
## ZIP-UP TERMS

**Wall Trim:** The "E" shaped trim that attaches to the walls around the entire periphery.

**Rail:** These are the mounting pieces that will run the length of your room attached to your joists.

**Panel:** Refers to the show surface of your Zip-UP Ceiling® System. The panels "Zip" into the rails allowing for easy access to your plumbing and electrical.

**Seam Trim:** This is the piece that caps the end of rails that do not end at wall trim.



CEILING® SYSTEM  
US PATENT 7,810,294 B2

[www.zipupceiling.com](http://www.zipupceiling.com)  
**Have Questions**  
**on Design/Installation?**  
**Call 888.449.4787**



P.O. Box 2283 | 2500 Old Hadar Road | Norfolk, NE 68702-2283 | 402.379.9695 | 888.379.9695 | Fax 402.379.9737

## INSTALLS IN 5 EASY STEPS!



1) Attach the wall trim around the perimeter of the room

2) Insert the first panel into the wall trim

3) Attach the first main rail to the first panel

4) Attach the first main rail to the ceiling joists

5) Attach the second panel to first main rail

Repeat steps 3 - 5 across the room

## BEFORE YOU BEGIN

**Preparing your room:** Take a good look at the area you are finishing. Any obstacles that hang down more than 2 inches from your joists will need to be boxed in. This should be done with the construction method of your choice that will provide the aesthetics you would like to see with your Zip-UP Ceiling® System. Another alternative to getting around these obstacles is to “drop” your Zip-UP Ceiling® System by creating a lattice work that extends from your joist to your desired height. You do this by attaching the lattice parallel to your joists, (2 x 2 lumber will suffice to make your lattice) spaced about every 4 feet.

**Ceiling Layout:** Since the Zip-UP Ceiling® System is designed to attach perpendicular to your joists, you can simply “Turn” your Zip-UP Ceiling® System 90 degrees by attaching furring strips that are spaced about every 4 feet running perpendicular to your joists.

**Tools:** The tools you will use to install your Zip-UP Ceiling® System are as follows: tin snips, utility knife, hack saw, tape measure, and a power drill/screwdriver. *NO SPECIALTY TOOLS* are needed for installation.

**Plan your ceiling:** You will want to make sure that your ceiling is centered such that you do not end up with a very small panel on either side of your room and that main rail will not fall on top of piping that is running perpendicular to the joists. Measure your room width to start. Since the center of Main Rail to center of Main Rail dimension is 12 1/8 inches, you will need to divide the room width by this number to derive the amount of panels you need. If your room is longer than the length of panels available, you will need to plan for a seam. You can start from the center of your room and work to the sides, or you can start from one wall and work across the room to the other side. We recommend the later.

**Estimating materials:** To estimate your materials you will start with the wall trim. This will equal the combined length of every wall around the perimeter of your room. The number of panels will be derived from the width of your room, taking into consideration your layout calculated in the previous step. The amount of Main Rails for each section equals your panels minus one. If your room is longer than the length of panels available you will need to determine how many seams are required. The amount of Seam Trim you will need is based on the width of the room and the number of seams needed.

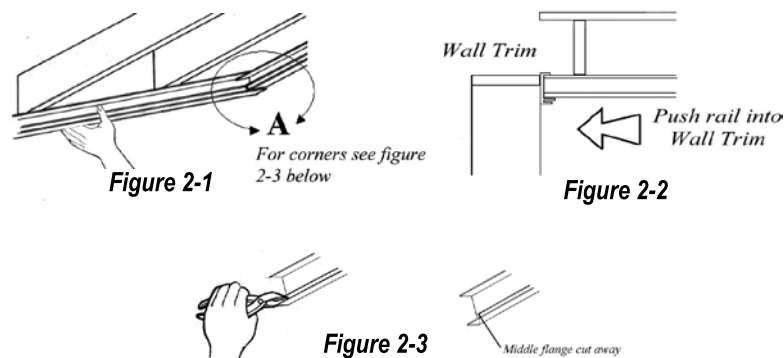
**Additional materials:** Screws work best for attaching your Zip-UP Ceiling® System. We recommend using 1” to dry-wall screws.

**WARNING:** Corners and cut edges may be sharp. Wear safety glasses and use due care when handling.

## INSTALLING WALL TRIM

Install the wall trim by pushing it against the wall and sliding it up the wall until it rests against the bottom of the ceiling joists (Figure 2-1 and 2-2). If there are no ceiling joists to push up against, snap a chalk line to mark where the top or bottom of the wall trim should be. Then put up the wall trim using the chalk line as your guide. Install the wall trim completely around the room.

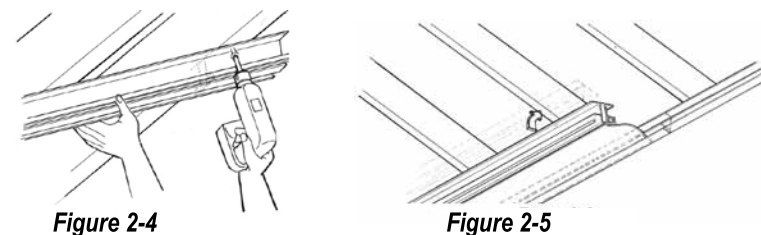
Corners can be mitered, or simply overlapped as indicated in Figure 2-1 and 2-3. To make the overlap condition the Middle flange of the wall trim should be cut out at a 45 degree angel. This will allow the panel to fit in properly with out Bulging the material.



## INSTALLING THE FIRST RAIL

After you have installed the Wall Trim, and have put careful consideration into your layout, you are ready to install the Panels and Main Rails. The first Main Rail installation is VERY IMPORTANT to ensure the overall quality of your Zip-UP Ceiling® System. It is this Main Rail that will be the keystone from which the rest of the Main Rails will be based. There are two methods to put up your Main Rails.

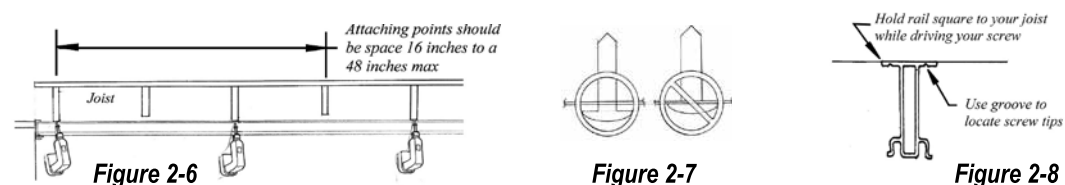
Refer to the “Plan your ceiling” paragraph from the first page. The measurement exercise you went through in the “Plan your ceiling” paragraph should have told you where your center Panel will be and how wide the cut Panels will be along the walls. You can start with the Main Rail in the center of the room if you wish, but we recommend starting with a cut Panel at one wall and install your ceiling as you go across your room. Cut the length of the Panel to be used on this first wall and prep the Panel ends (see Prepping Your Panel). Fit the cut edge into the Wall Trim. Zip your first Main Rail into the Panel, making sure you insert the end of the Main Rail as far into the Wall Trim as possible (Figure 2-2 and 2-5). The Wall Trim will assist in holding the rail and panel up as you make your attachments (Figure 2-5). Rotate the Main Rail up making sure that the Main Rail rests flat against and is perpendicular to the ceiling joists. Attach with screws (Figure 2-7). Because the Main Rails are ridged, you can span a maximum of 4 feet without using a screw. By using the first Panel as a guide for the first Main Rail, you can assure the first Main Rail will be straight and parallel to the wall.



## THE ZIP-UP CEILING® SYSTEM IS SELF LEVELING

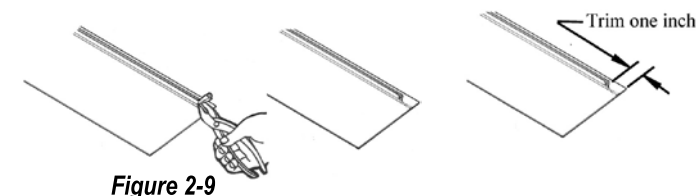
**IMPORTANT:** To let your rails self level, do not screw into every joist. Making an attachment at every joist may cause the ceiling panels to warp. Space your attaching points out to every second or even third joist, skipping those joists that are highest (Figure 2-6). The rails are stiff enough and are designed for this. **DO NOT OVER TORQUE THE SCREWS** (see Figures 2-7 and 2-8). By leaving a small amount of room between the bottom of your screw head and rail you avoid twisting the rail out of shape.

NOTE: Deformation in the surface of the panels may occur if the Main Rail is not square to the joist when attached, or attachments are made too often.



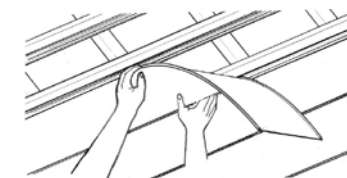
## PREPPING YOUR PANEL

There is some important prep work to be done to your Panels before installing them. First the Zip-UP feature must be trimmed approximately one inch from the ends (see Figure 2-9). This material can be removed easily with a pair of tin snips or pliers. Carefully cut the area of the feature away to ensure proper fit to the Wall Trim. After the Panel is prepped, start at the wall, tucking the end into the Wall trim's lower channel. Zip your panel into the patented Zip-UP rail as in Figure 2-10. Before installation, it is desirable to wipe the panel clean for best aesthetic results.



## INSTALLING THE SECOND RAIL AND MAIN RAIL

To install the second Panel and Main Rail, zip-up the next Panel into the first Main Rail, making sure the cut end of the Panel is inserted into the Wall Trim. Next, zip the second Main Rail into the Panel, again making sure the ends of the Main Rail are captured firmly by the Wall Trim (Note that the first Main Rail will hold the assembly up). Rotate the Main Rail and Panel up to the ceiling joists and make your attachments (Figure 2-5).

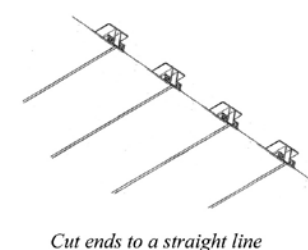


## REMAINING RAILS AND PANELS

Proceed across your room, installing Panels and Main Rails in the same way.

## INSTALL SEAM RAIL

Some installations may require the use of a seam. A seam is necessary when the length of the room is greater than the length of your panel. The Seam Trim is designed to cap the end of the Main Rails. Before installing the Seam Trim, the ends of the Main Rails must be trimmed even (Figure 3-1). This is to make sure your Seam Trim is straight and centered. To even out the Main Rail ends, peel back the Panels, then use a chalk line (or any device that you may have for marking a straight line) to mark the ends of the Main Rails and cut them. Install the Seam Trim and secure it to the Main Rails by screwing it to the end of the Main Rails (figure 3-2). Install the first Main Rail of the next section repeating the steps taken on the previous page in “Installing the First Panel and Main Rail”. Make sure the Panel edges align between the two sections. The Seam Trim holds the end of the new Main Rails the same way your Wall Trim did in the first section.



**NOTE:** The Seam Trim MUST be installed after the first section is completed and before the next section is started. This is because the Seam Trim fits between the Main Rail ends of the two sections (Figure 3-3).

Figure 3-1

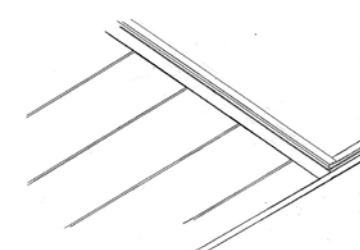


Figure 3-2

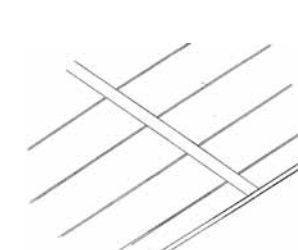


Figure 3-3

## INSTALLING LIGHTING.

### Canister lights:

Most common canister lights can be used with the Zip-UP Ceiling® System. To install the canister light, use the main rails as your support. It is recommended that the main rails in the area in which you are installing the canister light should be secured to the joists to give extra support to the main rails and prevent sagging. Secure the canister light to the main rail. Locate and cut the opening for the canister light in the Zip-UP panel. Adjust the canister light to be flush with the Zip-UP panel.

### Hanging lights:

Hanging lights can be installed using a light bracket. Use the main rails as your support. It is recommended that the main rails in the area in which you are installing the light bracket should be secured to the joists to give extra support to the main rails and prevent sagging. Secure the light bracket to the main rail. Locate and cut the opening for the light bracket in the Zip-UP Panel. Install the hanging light to the light bracket.

### Florescent lights:

The Zip-UP Ceiling® System will work with most florescent lights that fit between the ceiling joists and use the translucent plexi-glass covers. During the layout of the room as described in the “Plan your ceiling” paragraph on page 1, determine where the florescent lighting will be placed. During the installation of the Main Rails, create the box for the florescent light with the Main Rails and Seam Trim. Use the Seam Trim as the lip to hold up the translucent plexi-glass cover.

**WARNING:** Any florescent light package that does not fit between the joists, or hangs down more than the two inches from the joist will not work with the Zip-UP Ceiling® System. You must box around this lighting traditionally.